



# LATITUDE 5330/5430/5530

Work anywhere on  
our most scalable and  
sustainable Latitude.



## LATITUDE

# 5330/5430/5530

Work anywhere on our most scalable<sup>1</sup> and sustainable Latitude.

Designed with versatility for any business with intelligent performance, outstanding screen experience and built-in security and privacy options.

Ideal for Accountants, Call Center Reps, Finance, IT, etc. driven to produce results and strive for efficiency. They need the highest security and scalable performance offerings for desk productivity with the flexibility to work remotely.



...  
**The world's smallest commercial mainstream PC<sup>2</sup>**  
Small and versatile with even more features you expect from our most scalable Latitude.

...  
**New intelligent privacy features: Onlooker Detection** – alerts you of onlookers and protects data on screen. You can texturize screen or enable **SafeScreen** if available.  
**Look-away Detect** – knows when you're not looking at screen & dims for privacy and battery savings.

...  
**USB Type C & Thunderbolt 4**  
Dual USB Type C with Thunderbolt 4 ports are standard, HDMI 2.0, RJ45 (14"/15") and more.

...  
**Run cooler & quieter**  
New larger fans across the series plus patented dual opposite outlet fans (14"/15") improve cooling.

...  
Power for more of your work available **Intel vPro® with 12<sup>th</sup> Gen Intel® up to Core™ i7 P-series (28W)**. Offering up to 64GB DDR memory, storage up to 2TB, and both dual storage & discrete graphics options on 15".

...  
**WiFi6E & 4G LTE options**  
Stay connected at your desk or on-the-go.

...  
**ExpressSign-in**  
Wake your system when you approach and lock it when you step away.

...  
**Intelligent Audio with neural noise cancellation**  
Collaborate confidently with AI-based background noise elimination.

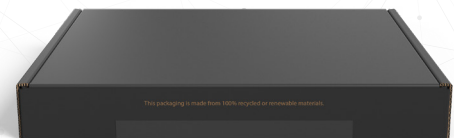
...  
**Displays for every user**  
Options including ComfortView Plus Low Blue Light; max your battery life with super low power panels; 4K UHD 400 nit on 15"; touch privacy on 14"; 2-in-1 with Gorilla Glass on 13" and more.

...  
Utilize 2 or more networks at once with **ExpressConnect, world's 1st simultaneous multi-network connection** for faster data and video downloads<sup>19</sup>.

...  
**Outstanding run-time plus charge faster with ExpressCharge**  
Multiple battery options up to 58 Whr and next generation SLP Panels.

...  
**Our most sustainable Latitude Series**  
Latitude 5000 were the 1<sup>st</sup> PCs to use bio-based material - 21% in the lid, 39% in the bottom bumpers; Plus more sustainable parts inside - 28% ocean-bound plastic fan housing case & 50% recycled plastic material in the battery frame.<sup>36</sup>

...  
**Enterprise-level world's most secure, serviceability & durability** Passes **MIL-STD 810H** tests. 13" available as laptop or 2-in-1 with same BIOS and model number.



New 100% recycled or renewable packaging<sup>37</sup>. Easy to open, uses less carbon to ship.

See important information on last page

LATITUDE

# 5330/5430/5530

Sustainability on Dell Latitude

Leading the industry in sustainable practices in our products, packaging and supply chain.

**OUR MOST SUSTAINABLE LATITUDE PORTFOLIO:  
WORKING TOWARD OUR GOALS, SO YOU CAN MEET YOURS.**



### Packaging Innovation

100%

Recycled or renewable packaging across all new Latitude PCs. Easy-to-open and uses less carbon to ship. It's the 1<sup>st</sup> design that already meets our 2030 moonshot goals.<sup>37</sup>

### Design

1<sup>st</sup>

Latitude 5000 were the 1<sup>st</sup> PCs to use reclaimed carbon fiber and tree-based bioplastic<sup>22</sup>.

### Recycling e-waste



Securely, responsibly retire your IT equipment with Dell regardless of brand, in support of a circular economy. Learn more at [Dell.com/Recycle](https://Dell.com/Recycle).

## LATITUDE HAS

90+

EPEAT registered products<sup>21</sup>



100%

EPEAT Gold in 2022 products



35+

TCO 8 certified configurations



8.0

ENERGY STAR<sup>®</sup> throughout the portfolio



See important information on last page

LATITUDE

# 5330/5430/5530

## Dell Optimizer

We make it intelligent. You make it yours.

Dell Optimizer revolutionizes the way you work by fueling the world's most intelligent PCs<sup>24</sup>. It is a business, AI-based optimization software that learns and responds to the way you work and is designed to automatically improve application performance, battery run-time, audio settings and privacy - all in the background while you're working.

Accomplish anything with built-in intelligence that learns and adapts.



### Intelligent privacy anywhere

Onlooker detection lets you texturize your screen when an intruder is detected, and Look Away Detect darkens the PC screen based on user behavior.



### Extended power

ExpressCharge analyzes your power usage habits to improve PC battery utilization, extend run time, and charge your system faster.



### Unmatched connectivity

ExpressConnect<sup>28</sup> provides the world's first simultaneous multi-network connection<sup>29</sup> that joins the best network<sup>30</sup> available.



### Faster sign-in

ExpressSign-in's<sup>25</sup> proximity sensor detects your presence to wake on approach before Windows Hello logs you in via facial recognition.



### Enhanced audio

Intelligent Audio delivers audio and mic enhancements and reduces background noise using Neural noise cancellation.



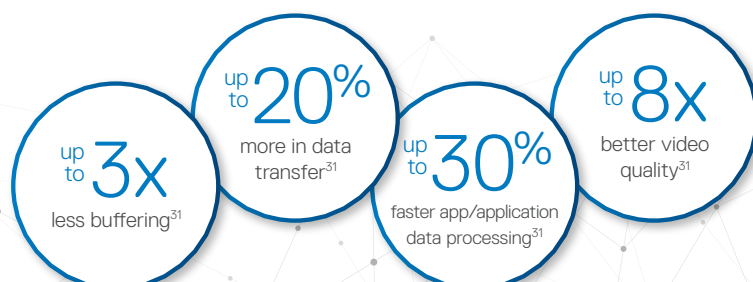
### Improved performance

ExpressResponse<sup>26</sup> analyzes how you use your preferred apps<sup>27</sup> to boost performance.



### Simplified manageability

Elevate work experience with an easy-to-manage application that provides a seamless experience for both end-users and IT decision-makers.



See important information on last page



## RECOMMENDED SOLUTIONS



**Dell 27 USB-C HUB Monitor  
- P2723DE**

Stay productive no matter where you work with this sleek 27" GHD hub monitor with ComfortView Plus.



**Dell Thunderbolt 4 Dock  
- WD22TB4**

Experience lightning fast charging and Thunderbolt 4 connectivity with this flexible and powerful modular dock.



**Dell Pro Wireless Keyboard and Mouse - KM5221W**

Enhance your everyday productivity with a quiet full-size keyboard and mouse combo that offers programmable shortcuts and 36 months battery life.<sup>38</sup>



**Dell USB-C Mobile Adapter  
- DA310**

Compact and portable 7-in-1 USB-C mobile adapter provides superb video, data connectivity and up to 90W power pass-through to your PC.



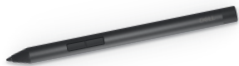
**Dell Pro Wireless Headset  
- WL5022**

Work from anywhere with this Bluetooth Teams certified headset that lets you switch seamlessly to your PC or smartphone and enjoy crystal clear audio on the go.



**Dell Speakerphone  
- SP3022**

Experience rich and clear audio with this intelligent Microsoft Teams certified speakerphone.



**Dell Active Pen  
- PN5122W**

Write naturally and precisely with this multi-protocol, high sensitivity active pen for our 2-in-1s.



**Dell EcoLoop Pro Backpack  
- CP5723**

An eco-conscious backpack for protection on-the-go.



**Dell Mobile Pro Wireless Mouse - MS5120W**

Connect your mouse conveniently via 2.4GHz wireless or Bluetooth and enhance your productivity with programmable shortcut buttons.

# 5330/5430/5530

FEATURE	TECHNICAL SPECIFICATION	TECHNICAL SPECIFICATION	TECHNICAL SPECIFICATION
<b>MODEL NUMBER<sup>1</sup></b>	Latitude 5330 (laptop or 2-in-1)	Latitude 5430 (laptop)	Latitude 5530 (laptop)
<b>PROCESSOR OPTIONS<sup>1</sup></b>	12 <sup>th</sup> Gen Intel® Core™ processors up to i7 U15 vPro®	11 <sup>th</sup> Gen Intel® Core™ processors up to i5 U15 vPro® 12 <sup>th</sup> Gen Intel® Core™ processors up to i7 U15 vPro®	11 <sup>th</sup> Gen Intel® Core™ processors up to i5 U15 vPro® 12 <sup>th</sup> Gen Intel® Core™ processors up to i7 U15 vPro® 12 <sup>th</sup> Gen Intel® Core™ processors up to i7 P28 vPro®
<b>OPERATING SYSTEM<sup>1</sup></b>	Microsoft® Windows 10 Pro 64-bit (11 License) Microsoft® Windows 11 Home 64-bit Microsoft® Windows 11 Pro 64-bit Ubuntu® 20.04 LTS, 64-bit (Laptop only)	Microsoft® Windows 10 Pro 64-bit (11 License) Microsoft® Windows 11 Home 64-bit Microsoft® Windows 11 Pro 64-bit Ubuntu® 20.04 LTS, 64-bit NeoKylin	Microsoft® Windows 10 Pro 64-bit (11 License) Microsoft® Windows 11 Home 64-bit Microsoft® Windows 11 Pro 64-bit Ubuntu® 20.04 LTS, 64-bit NeoKylin
<b>MEMORY OPTIONS<sup>1,2,3</sup></b>	Up to 32GB DDR4 (on board) 3200MHz	Up to 64GB DDR4 (socketed) 3200MHz	Up to 64GB DDR4 (socketed) 3200MHz
<b>CHIPSET<sup>1</sup></b>	Integrated with the processor	Integrated with the processor	Integrated with the processor
<b>INTEL RESPONSIVENESS TECHNOLOGIES<sup>1,7</sup></b>	Intel® Rapid Storage Technology	Intel® Rapid Storage Technology	Intel® Rapid Storage Technology
<b>GRAPHICS<sup>1,3,5</sup></b>	Intel® Iris® Xe Graphics with Intel® Core™ i5/i7 processors Intel UHD Graphics with Intel® Core™ i3 processor	Intel® Iris® Xe Graphics with Intel® Core™ i5/i7 processors and dual-channel memory configuration Intel UHD Graphics with Intel® Core™ i3 processor or single channel memory	Optional NVIDIA® GeForce® MX450 (2 GB DDR6 dedicated) Intel® Iris® Xe Graphics with Intel® Core™ i5/i7 processors and dual-channel memory configuration Intel UHD Graphics with Intel® Core™ i3 processor or single channel memory
<b>DISPLAY<sup>1</sup></b>	<b>2-in-1</b> 13.3" FHD (1920 x 1080) Anti Glare, 16x9, 300 nits, Gorilla Glass 6 DXC, Active Pen Support, WVA, 72% NTSC  <b>Laptop</b> 13.3" FHD (1920 x 1080) Anti Glare, 16x9, Non-touch, WVA, 250 nits, 45% NTSC 13.3" FHD (1920 x 1080) Anti Glare, 16x9, Touch, WVA, 300 nits, 72% NTSC 13.3" FHD (1920 x 1080) Anti Glare, 16x9, Non-touch, 400 nits, WVA, Super Low Power, ComfortView Plus Low Blue Light, sRGB 100%	<b>Laptop</b> 14" HD (1366 x 768) Anti Glare, 16x9, Non-touch, TN, 220 nits, 45% NTSC 14" FHD (1920 x 1080) Anti Glare, 16x9, Non-touch, WVA, 250 nits, 45% NTSC 14" FHD (1920 x 1080) Anti Glare, 16x9, Touch, WVA, 300 nits, 100%, NTSC 14" FHD (1920 x 1080) Anti Reflective/Anti Smudge, Non-touch, WVA, Super Low Power, ComfortView Plus Low Blue Light, 400 nits, sRGB 100% 14" FHD (1920 x 1080) Anti Glare, 16x9, Touch, Digital Privacy SafeScreen, WVA, 300 nits, sRGB 100%	<b>Laptop</b> 15.6" HD (1366x768) Anti Glare, 16x9, Non-touch, TN, 220 nits, 45% NTSC 15.6" FHD (1920x1080) Anti-Glare, 16x9, Non-touch, WVA, 250nits, 45% NTSC 15.6" FHD (1920x1080) Anti-Glare, 16x9, Touch, WVA, 250nits, 45% NTSC 15.6" FHD (1920x1080) Anti-Glare, 16x9, Non-touch, WVA, Super Low Power, ComfortView Plus Low Blue Light, 400nits, sRGB 100% 15.6" UHD (3840x2160) Anti-Glare, 16x9, Non-touch, WVA, Super Low Power, ComfortView Plus Low Blue Light, 400nits, sRGB 100%
<b>STORAGE OPTIONS<sup>1,3</sup></b>	up to 1 TB, M.2, PCIe, SSD, Class 35 256 GB, M.2, PCIe NVMe, SED, Class 35 2 TB, M.2, PCIe NVMe, SSD, Class 40 up to 1 TB, M.2, PCIe NVMe, SED, Class 40	up to 1 TB, M.2, PCIe, SSD, Class 35 256 GB, M.2, PCIe NVMe, SED, Class 35 2 TB, M.2, PCIe NVMe, SSD, Class 40 up to 1 TB, M.2, PCIe NVMe, SED, Class 40	up to 1 TB, M.2, PCIe, SSD, Class 35 256 GB, M.2, PCIe NVMe, SED, Class 35 2 TB, M.2, PCIe NVMe, SSD, Class 40 up to 1 TB, M.2, PCIe NVMe, SED, Class 40
<b>SECURITY<sup>1</sup></b>	TPM 2.0 FIPS 140-2 Certified, TCG Certified Optional Windows Hello Compliant Fingerprint Reader in power button  <b>Optional Security Hardware Authentication Bundles</b> 1: Touch Fingerprint Reader (in Power Button) with Control Vault 3.0 Advanced Authentication with FIPS 140-2 Level 3 Certification 2: Contacted Smart Card with Control Vault 3.0 Advanced Authentication with FIPS 140-2 Level 3 Certification 3: Touch Fingerprint Reader (in Power Button) and Contacted Smart Card with Control Vault 3.0 Advanced Authentication with FIPS 140-2 Level 3 Certification 4: Contacted Smart Card, Contactless Smart Card NFC and Control Vault 3.0 Advanced Authentication with FIPS 140-2 Level 3 Certification 5: Touch Fingerprint Reader (in Power Button), Contacted Smart Card, Contactless Smart Card NFC and Control Vault 3.0 Advanced Authentication with FIPS 140-2 Level 3 Certification  Optional Face IR camera (Windows Hello compliant) with ExpressSign-in (Camera Sensing) Optional Intelligent Privacy (onlooker detection with screen texturizing and adaptive dimming) Camera Shutter  Dell Client Command Suite: On-Prem Dell Client Command Suite: Cloud Dell Optimizer Dell Power Manager Support Assist for PCs Support Assist OS Recovery (Excalibur) Dell SafeBIOS - Off Host Verification Dell SafeBIOS - Indicators of Attack	TPM 2.0 FIPS 140-2 Certified, TCG Certified Optional Windows Hello Compliant Fingerprint Reader in power button  <b>Optional Security Hardware Authentication Bundles</b> 1: Touch Fingerprint Reader (in Power Button) with Control Vault 3.0 Advanced Authentication with FIPS 140-2 Level 3 Certification 2: Contacted Smart Card with Control Vault 3.0 Advanced Authentication with FIPS 140-2 Level 3 Certification 3: Touch Fingerprint Reader (in Power Button) and Contacted Smart Card with Control Vault 3.0 Advanced Authentication with FIPS 140-2 Level 3 Certification 4: Contacted Smart Card, Contactless Smart Card NFC and Control Vault 3.0 Advanced Authentication with FIPS 140-2 Level 3 Certification 5: Touch Fingerprint Reader (in Power Button), Contacted Smart Card, Contactless Smart Card NFC and Control Vault 3.0 Advanced Authentication with FIPS 140-2 Level 3 Certification  Optional Face IR camera (Windows Hello compliant) with ExpressSign-in (Camera Sensing) Optional Intelligent Privacy (onlooker detection with screen texturizing and adaptive dimming) Camera Shutter Optional SafeScreen  Dell Client Command Suite: On-Prem Dell Client Command Suite: Cloud Dell Optimizer Dell Power Manager Support Assist for PCs Support Assist OS Recovery (Excalibur) Dell SafeBIOS - Off Host Verification Dell SafeBIOS - Indicators of Attack	TPM 2.0 FIPS 140-2 Certified, TCG Certified Optional Windows Hello Compliant Fingerprint Reader in power button  <b>Optional Security Hardware Authentication Bundles</b> 1: Touch Fingerprint Reader (in Power Button) with Control Vault 3.0 Advanced Authentication with FIPS 140-2 Level 3 Certification 2: Contacted Smart Card with Control Vault 3.0 Advanced Authentication with FIPS 140-2 Level 3 Certification 3: Touch Fingerprint Reader (in Power Button) and Contacted Smart Card with Control Vault 3.0 Advanced Authentication with FIPS 140-2 Level 3 Certification 4: Contacted Smart Card, Contactless Smart Card NFC and Control Vault 3.0 Advanced Authentication with FIPS 140-2 Level 3 Certification 5: Touch Fingerprint Reader (in Power Button), Contacted Smart Card, Contactless Smart Card NFC and Control Vault 3.0 Advanced Authentication with FIPS 140-2 Level 3 Certification 6: Fingerprint Reader (on Palmrest) and Contacted Smart Card with Control Vault 3.0 Advanced Authentication with FIPS 140-2 Level 3 Certification  Optional Face IR camera (Windows Hello compliant) with ExpressSign-in (Camera Sensing) Optional Intelligent Privacy (onlooker detection with screen texturizing and adaptive dimming) Camera Shutter  Dell Client Command Suite: On-Prem Dell Client Command Suite: Cloud Dell Optimizer Dell Power Manager Support Assist for PCs Support Assist OS Recovery (Excalibur) Dell SafeBIOS - Off Host Verification Dell SafeBIOS - Indicators of Attack

# 5330/5430/5530

**FEATURE TECHNICAL SPECIFICATION**

**TECHNICAL SPECIFICATION**

**TECHNICAL SPECIFICATION**

**MODEL NUMBER<sup>1</sup>** Latitude 5330 (laptop or 2-in-1)

**SECURITY<sup>1</sup> (CONT)** Dell SafeID  
Vmware Carbon Black Endpoint Standard  
Vmware Carbon Black Endpoint Advanced  
Vmware Carbon Black Endpoint Enterprise  
Absolute Visibility  
Absolute Control  
Absolute Resilience  
Dell Encryption Personal  
Dell Encryption Enterprise  
Netskope Cloud Access Security Broker (CASB)  
Netskope Secure Web Gateway  
Netskope Private Access

**DOCKING<sup>1</sup>** *(Docks are optional, sold separately)*  
Dell Thunderbolt™ Dock - WD19TBS  
Dell Thunderbolt™ Dock - WD22TB4  
Dell Performance Dock - WD19DCS  
Dell USB-C Dock - WD19S  
Dell Universal Dock D6000/ D6000S  
Dell Dual Charge Dock - HD22Q (May 2022)

**MULTIMEDIA<sup>1</sup>** HD Camera, Temporal Noise Reduction, Camera Shutter  
FHD + IR Camera, Temporal Noise Reduction, Camera Shutter, ExpressSign-in™  
FHD + IR Camera + Proximity Sensor, Temporal Noise Reduction, Camera Shutter, ExpressSign-in™, Intelligent Privacy, Ambient (laptop only) Light sensor  
2 x High Quality Speakers  
2 x Noise Canceling Microphones  
Waves MaxxAudio Pro  
Intelligent Audio with Neural Noise Cancellation  
Universal Audio jack  
No Camera / No Microphone Options Available

**BATTERY OPTIONS<sup>16</sup>** 3 cell 41 Whr Polymer , ExpressCharge 1.0™, ExpressCharge Boost™ & Long Life Cycle capable  
4 cell 58 Whr Polymer , ExpressCharge 1.0™, ExpressCharge Boost™ & Long Life Cycle capable

**POWER OPTIONS<sup>1</sup>** 60W adapter, Type-C  
65W adapter, Type-C  
90W adapter, Type-C

**CONNECTIVITY OPTIONS<sup>1</sup>** Microsoft Modern Standby Compliant

**Wireless LAN Options<sup>8</sup>:**  
Intel® Wi-Fi 6E (6GHz) AX211 2x2 + Bluetooth 5.2  
Realtek RTL 8822CE 2x2 Wi-Fi 5, Bluetooth 5.0  
MediaTek MT7921 Wi-Fi 6, Bluetooth 5.0  
Intel® Wi-Fi 6 AX201 2x2 802.11ax 160MHz, Bluetooth 5.1  
No wireless card installed option available

**Mobile Broadband Options<sup>8,10</sup>:**  
Intel® XMM™ 7360 LTE Advanced Cat 9 WWAN (DW5820e) (eSIM capable)  
Intel® XMM™ 7360 LTE Advanced Cat 9 WWAN (DW5820e) China, Turkey  
Intel® XMM™ 7360 LTE Advanced Cat 9 WWAN (DW5820e) T-Mobile, AT&T, Verizon, US only

**PORTS, SLOTS & CHASSIS<sup>1</sup>** 2x USB Type C Thunderbolt™ 4.0 with Power Delivery & DisplayPort  
2x USB 3.2 Gen (1 with Power share)  
1x HDMI 2.0  
1x external uSIM card tray (optional) - eSim capable  
1x uSD 4.0 Memory card reader  
1x Contacted SmartCard Reader (optional)  
1x Touch Fingerprint Reader in Power Button (optional)  
Universal Audio Jack  
Wedge Shaped Lock slot

**MODEL NUMBER<sup>1</sup>** Latitude 5430 (laptop)

**SECURITY<sup>1</sup>** Dell SafeID  
Vmware Carbon Black Endpoint Standard  
Vmware Carbon Black Endpoint Advanced  
Vmware Carbon Black Endpoint Enterprise  
Absolute Visibility  
Absolute Control  
Absolute Resilience  
Dell Encryption Personal  
Dell Encryption Enterprise  
Netskope Cloud Access Security Broker (CASB)  
Netskope Secure Web Gateway  
Netskope Private Access

**DOCKING<sup>1</sup>** *(Docks are optional, sold separately)*  
Dell Thunderbolt™ Dock - WD19TBS  
Dell Thunderbolt™ Dock - WD22TB4  
Dell Performance Dock - WD19DCS  
Dell USB-C Dock - WD19S  
Dell Universal Dock D6000/ D6000S  
Dell Dual Charge Dock - HD22Q (May 2022)

**MULTIMEDIA<sup>1</sup>** HD Camera, Temporal Noise Reduction, Camera Shutter  
FHD + IR Camera, Temporal Noise Reduction, Camera Shutter, ExpressSign-in™  
FHD + IR Camera + Proximity Sensor, Temporal Noise Reduction, Camera Shutter, ExpressSign-in™, Intelligent Privacy, Ambient Light sensor  
2 x High Quality Speakers  
2 x Noise Canceling Microphones  
Waves MaxxAudio Pro  
Intelligent Audio with Neural Noise Cancellation  
Universal Audio jack  
No Camera / No Microphone Options Available

**BATTERY OPTIONS<sup>16</sup>** 3 cell 41 Whr Polymer , ExpressCharge 1.0™, ExpressCharge Boost™ & Long Life Cycle capable  
4 cell 58 Whr Polymer , ExpressCharge 1.0™, ExpressCharge Boost™ & Long Life Cycle capable

**POWER OPTIONS<sup>1</sup>** 60W adapter, Type-C  
65W adapter, Type-C  
90W adapter, Type-C

**CONNECTIVITY OPTIONS<sup>1</sup>** Microsoft Modern Standby Compliant

**Wireless LAN Options<sup>8</sup>:**  
Intel® Wi-Fi 6E (6GHz) AX211 2x2 + Bluetooth 5.2  
Realtek RTL 8822CE 2x2 Wi-Fi 5, Bluetooth 5.0  
MediaTek MT7921 Wi-Fi 6, Bluetooth 5.0  
Intel® Wi-Fi 6 AX201 2x2 802.11ax 160MHz, Bluetooth 5.1  
No wireless card installed option available

**Mobile Broadband Options<sup>8,10</sup>:**  
Intel® XMM™ 7360 LTE Advanced Cat 9 WWAN (DW5820e) (eSIM capable)  
Intel® XMM™ 7360 LTE Advanced Cat 9 WWAN (DW5820e) China, Turkey  
Intel® XMM™ 7360 LTE Advanced Cat 9 WWAN (DW5820e) T-Mobile, AT&T, Verizon, US only

**PORTS, SLOTS & CHASSIS<sup>1</sup>** 2x USB Type C Thunderbolt™ 4.0 with Power Delivery & DisplayPort  
2x USB 3.2 Gen (1 with Power share)  
1x HDMI 2.0  
1x external uSIM card tray (optional) - eSim capable  
1x uSD 4.0 Memory card reader  
1x Contacted SmartCard Reader (optional)  
1x Touch Fingerprint Reader in Power Button (optional)  
Universal Audio Jack  
Wedge Shaped Lock slot  
RJ45

**MODEL NUMBER<sup>1</sup>** Latitude 5530 (laptop)

**SECURITY<sup>1</sup>** Dell SafeID  
Vmware Carbon Black Endpoint Standard  
Vmware Carbon Black Endpoint Advanced  
Vmware Carbon Black Endpoint Enterprise  
Absolute Visibility  
Absolute Control  
Absolute Resilience  
Dell Encryption Personal  
Dell Encryption Enterprise  
Netskope Cloud Access Security Broker (CASB)  
Netskope Secure Web Gateway  
Netskope Private Access

**DOCKING<sup>1</sup>** *(Docks are optional, sold separately)*  
Dell Thunderbolt™ Dock - WD19TBS  
Dell Thunderbolt™ Dock - WD22TB4  
Dell Performance Dock - WD19DCS  
Dell USB-C Dock - WD19S  
Dell Universal Dock D6000/ D6000S  
Dell Dual Charge Dock - HD22Q (May 2022)

**MULTIMEDIA<sup>1</sup>** HD Camera, Temporal Noise Reduction, Camera Shutter  
FHD + IR Camera, Temporal Noise Reduction, Camera Shutter, ExpressSign-in™  
FHD + IR Camera + Proximity Sensor, Temporal Noise Reduction, Camera Shutter, ExpressSign-in™, Intelligent Privacy, Ambient Light sensor  
2 x High Quality Speakers  
2 x Noise Canceling Microphones  
Waves MaxxAudio Pro  
Intelligent Audio with Neural Noise Cancellation  
Universal Audio jack  
No Camera / No Microphone Options Available

**BATTERY OPTIONS<sup>16</sup>** 3 cell 41 Whr Polymer , ExpressCharge 1.0™, ExpressCharge Boost™ & Long Life Cycle capable  
4 cell 58 Whr Polymer , ExpressCharge 1.0™, ExpressCharge Boost™ & Long Life Cycle capable

**POWER OPTIONS<sup>1</sup>** 60W adapter, Type-C  
65W adapter, Type-C  
90W adapter, Type-C

**CONNECTIVITY OPTIONS<sup>1</sup>** Microsoft Modern Standby Compliant

**Wireless LAN Options<sup>8</sup>:**  
Intel® Wi-Fi 6E (6GHz) AX211 2x2 + Bluetooth 5.2  
Realtek RTL 8822CE 2x2 Wi-Fi 5, Bluetooth 5.0  
MediaTek MT7921 Wi-Fi 6, Bluetooth 5.0  
Intel® Wi-Fi 6 AX201 2x2 802.11ax 160MHz, Bluetooth 5.1  
No wireless card installed option available

**Mobile Broadband Options<sup>8,10</sup>:**  
Intel® XMM™ 7360 LTE Advanced Cat 9 WWAN (DW5820e) (eSIM capable)  
Intel® XMM™ 7360 LTE Advanced Cat 9 WWAN (DW5820e) China, Turkey  
Intel® XMM™ 7360 LTE Advanced Cat 9 WWAN (DW5820e) T-Mobile, AT&T, Verizon, US only

**PORTS, SLOTS & CHASSIS<sup>1</sup>** 2x USB Type C Thunderbolt™ 4.0 with Power Delivery & DisplayPort  
2x USB 3.2 Gen (1 with Power share)  
1x HDMI 2.0  
1x external uSIM card tray (optional) - eSim capable  
1x uSD 4.0 Memory card reader  
1x Contacted SmartCard Reader (optional)  
1x Touch Fingerprint Reader in Power Button (optional)  
1x Touch FIPS Fingerprint Reader in Palmrest (optional)  
Universal Audio Jack  
Wedge Shaped Lock slot  
RJ45

# 5330/5430/5530

FEATURE	TECHNICAL SPECIFICATION	TECHNICAL SPECIFICATION	TECHNICAL SPECIFICATION
<b>MODEL NUMBER<sup>1</sup></b>	Latitude 5330 (laptop or 2-in-1)	Latitude 5430 (laptop)	Latitude 5530 (laptop)
<b>DIMENSIONS &amp; WEIGHT<sup>1,5</sup></b>	Width: 12.04" / 305.7 mm Height: 0.67" / 16.92 mm Depth: 8.17" / 207.5 mm Screen to Body: 79.4% Laptop Starting Weight: 2.65 lbs / 1.2 kg 2-in-1 Starting Weight: 2.9 lbs / 1.32 kg	Width: 12.65" / 321.35 mm Height: 0.76" / 19.3 mm Depth: 8.35" / 212 mm Screen to Body: 82.1% Starting Weight: 3.01 lbs / 1.36 kg	Width: 14.09" / 357.8 mm Height: 0.82" / 20.77 mm Depth: 9.19" / 233.3 mm Screen to Body: 83.1% Starting weight: 3.5 lbs / 1.59 kg
<b>REGULATORY AND ENVIRONMENTAL COMPLIANCE<sup>1</sup></b>	Regulatory Model Number: Laptop P138G ; 2-in-1 P139G Regulatory Type Number: Laptop P138G002 ; 2-in-1 P139G002 ENERGY STAR compliant configurations available EPEAT Gold Registered. For specific country participation and rating, please see <a href="http://www.epeat.net">www.epeat.net</a> TCO compliant configurations available Trade Agreements Acts (TAA) configurations available Halogen-Free / Arsenic-Free BFR / PVC free <sup>9</sup>	Regulatory Model Number: P137G Regulatory Type Number: P137G005 / P137G006 ENERGY STAR compliant configurations available EPEAT Gold Registered. For specific country participation and rating, please see <a href="http://www.epeat.net">www.epeat.net</a> TCO compliant configurations available Trade Agreements Acts (TAA) configurations available Halogen-Free / Arsenic-Free BFR / PVC free <sup>9</sup>	Regulatory Model Number: P104F Regulatory Type Number: P104F005 / P104F006 ENERGY STAR compliant configurations available EPEAT Gold Registered. For specific country participation and rating, please see <a href="http://www.epeat.net">www.epeat.net</a> TCO compliant configurations available Trade Agreements Acts (TAA) configurations available Halogen-Free / Arsenic-Free BFR / PVC free <sup>9</sup>
<b>INPUT<sup>1</sup></b>	Optional 10-Finger Touch Display Microsoft® Precision Clickpad Spill Resistant Non-Backlit Keyboard Spill Resistant Backlit Keyboard Dell Premier Rechargeable Active Pen - PN7522W (optional, sold separately, 2-in-1 only) Dell Active Pen - PN5122W (optional, sold separately, 2-in-1 only)	Optional 10-Finger Touch Display Microsoft® Precision Clickpad Spill Resistant Non-Backlit Keyboard Spill Resistant Backlit Keyboard	Optional 10-Finger Touch Display Microsoft® Precision Clickpad Spill Resistant Non-Backlit Keyboard Spill Resistant Backlit Keyboard
<b>SENSORS<sup>1</sup></b>	All: Hall Effect Sensor, Sensor Hub. Gyroscope + Accelerometer on Laptops with Proximity Camera and on all 2-in-1s: Adaptive Thermal Performance (when Gyroscope/Accelerometer present). Added with Proximity Camera: Ambient Light Sensor, Windows Auto Brightness, IR User Proximity Detection. Added with 2-in-1: Digital Compass (Magnetometer), Screen Rotation support, Proximity for SAR compliance (with WWAN module) Near Field Proximity Sensor.	All: Hall Effect Sensor, Sensor Hub. Added with Proximity Camera: Gyroscope + Accelerometer, Ambient Light Sensor, Windows Auto Brightness, IR User Proximity Detection. Adaptive Thermal Performance (when Gyroscope/Accelerometer present).	All: Hall Effect Sensor, Sensor Hub. Added with Proximity Camera: Gyroscope + Accelerometer, Ambient Light Sensor, Windows Auto Brightness, IR User Proximity Detection. Adaptive Thermal Performance (when Gyroscope/Accelerometer present).
<b>SYSTEMS MANAGEMENT<sup>1</sup></b>	Intel® vPro™ Technology (iAMT 12) (optional, requires Intel WiFi® Link WLAN and a vPro compatible processor), Dell Client Command Suite available ( <a href="http://dell.com/command">dell.com/command</a> ), Factory Installed Dell Client Command   Update, Dell Command   Power Manager   Dell Optimizer	Intel® vPro™ Technology (iAMT 12) (optional, requires Intel WiFi® Link WLAN and a vPro compatible processor), Dell Client Command Suite available ( <a href="http://dell.com/command">dell.com/command</a> ), Factory Installed Dell Client Command   Update, Dell Command   Power Manager   Dell Optimizer	Intel® vPro™ Technology (iAMT 12) (optional, requires Intel WiFi® Link WLAN and a vPro compatible processor), Dell Client Command Suite available ( <a href="http://dell.com/command">dell.com/command</a> ), Factory Installed Dell Client Command   Update, Dell Command   Power Manager   Dell Optimizer
<b>WARRANTY AND SERVICE<sup>1</sup></b>	Limited Hardware Warranty <sup>4</sup> , Standard 3 year Mail-in Service after Remote Diagnosis <sup>11</sup> , optional 3, 4 and 5 year hardware warranty extensions, and 3-5 year Dell ProSupport contracts available <sup>12</sup>	Limited Hardware Warranty <sup>4</sup> , Standard 3 year Mail-in Service after Remote Diagnosis <sup>11</sup> , optional 3, 4 and 5 year hardware warranty extensions, and 3-5 year Dell ProSupport contracts available <sup>12</sup>	Limited Hardware Warranty <sup>4</sup> , Standard 3 year Mail-in Service after Remote Diagnosis <sup>11</sup> , optional 3, 4 and 5 year hardware warranty extensions, and 3-5 year Dell ProSupport contracts available <sup>12</sup>
<b>PERIPHERAL ECOSYSTEM<sup>1</sup></b>	Wide range of accessories designed and tested for the Latitude 5320 enable productivity when working remote, on the go or in the office.	Wide range of accessories designed and tested for the Latitude 5320 enable productivity when working remote, on the go or in the office.	Wide range of accessories designed and tested for the Latitude 5320 enable productivity when working remote, on the go or in the office.
<b>SUSTAINABILITY</b>	Biobased material in rubber feet and lid Post-consumer recycled plastic in lid, battery frame, palmrest, fan housing, inner frame. Recycled Carbon Fiber in the lid and bottom cover Packaging made from 100% recycled or renewable materials (coming later CY22)	Biobased material in rubber feet and lid Post-consumer recycled plastic in lid, battery frame, palmrest, fan housing, inner frame. Recycled Carbon Fiber in the lid and bottom cover Packaging made from 100% recycled or renewable materials (coming later CY22)	Biobased material in rubber feet and lid Post-consumer recycled plastic in lid, battery frame, palmrest, fan housing, inner frame. Recycled Carbon Fiber in the lid and bottom cover Packaging made from 100% recycled or renewable materials (coming later CY22)



## Product Disclosures:

- 1 Offering may vary by country and by configuration and operating system.
  - 2 A 64-bit operating system is required to support 4GB or more of system memory.
  - 3 GB means 1 billion bytes and TB equals 1 trillion bytes; actual capacity varies with preloaded material and operating environment and will be less.
  - 4 Limited Hardware Warranty: For copy of Limited Hardware Warranty, write Dell USA LP, Attn: Warranties, One Dell Way, Round Rock, TX 78682 or see [www.dell.com/warranty](http://www.dell.com/warranty).
  - 6 The stated Watt Hour (Whr) is not an indication of battery life.
  - 7 Intel Rapid Storage Technology requires a HDD, mSATA, or an SSD, as primary storage device and Windows OS required
  - 8 Wireless antenna available only at time of system purchase.
  - 9 Dell Latitude 5330/5430/5530 are brominated flame retardant free (BFR-free) and polyvinyl chloride free (PVC-free); meeting the definition of BFR-/PVC-free as set forth in the iNEMI Position Statement on the 'Definition of Low-Halogen Electronics (BFR-/CFR-/PVC-free)': Plastic parts contain less than 1,000 ppm (0.1%) of bromine (if the Br source is from BFRs) and less than 1,000 ppm (0.1%) of chlorine (if the Cl source is from CFRs or PVC or PVC copolymers). All printed circuit board (PCB) and substrate laminates contain bromine/chlorine total less than 1,500 ppm (0.15%) with a maximum chlorine of 900 ppm (0.09%) and maximum bromine being 900 ppm (0.09%).
  - 10 4G LTE antenna and 5G available only at time of system purchase. Mobile Broadband Subject to service provider's broadband subscription and coverage area; additional charges apply.
  - 11 Mail-in Service after Remote Diagnosis: Remote Diagnosis is determination by online/phone technician of cause of issue; may involve customer access to inside of system and multiple or extended sessions. If issue is covered by Limited Hardware Warranty ([www.dell.com/warranty](http://www.dell.com/warranty)) and not resolved remotely, technician and/or part will be dispatched, usually within 1 business day following completion of Remote Diagnosis. Availability varies. Other conditions apply.
  - 12 Dell Services: Availability and terms of Dell Services vary by region. For more information, visit [www.dell.com/servicesdescriptions](http://www.dell.com/servicesdescriptions).
  - 13 GB means 1 billion bytes and TB equals 1 trillion bytes; significant system memory may be used to support graphics, depending on system memory size and other factors.
  - 15 Weights vary depending on configuration and manufacturing variability; 0.990 kg configurability: up to i7 vPro (U15), FHD NT Ultralight LCD, WLAN, 41Whr battery, M.2 2230 class 35 SSD, No security, non-backlit KB.
  - 16 Based on Dell internal analysis, October 2021.
  - 17 Simultaneous multi-network connection (or Connection based teaming) is a new connectivity feature under ExpressConnect. It simultaneously sends and receives data and video traffic using two or more wired or wireless connections. Based on Dell internal analysis, September 2021.
  - 18 Based on Dell internal analysis, November 2021.
  - 19 Simultaneous multi-network connection (or Connection based teaming) is a new connectivity feature under ExpressConnect. It simultaneously sends and receives data and video traffic using two wired or wireless connections. Based on Dell internal analysis, September 2021. Simultaneous Data Transfer works with wired and wireless networks. For select Dell platforms, a USB Wi-Fi adapter is required to connect a second Wi-Fi network.
  - 20 Tree-based bioplastic in lid of Latitude 5000 Series and bio-based rubber in Latitude 5000 & 7000 Series.
  - 21 EPEAT registered where applicable. EPEAT registration varies by country. See [www.epeat.net](http://www.epeat.net) for registration status by country.
  - 22 Based on a Forrester Study commissioned by Dell Technologies and Intel: The Total Economic Impact of Dell's PC as a Service", November 2020 <https://www.delltechnologies.com/asset/en-us/solutions/business-solutions/industry-market/forrester-the-total-economic-impact-of-dells-pc-as-a-service.pdf>
  - 23 Based on a Forrester Study commissioned by Dell Technologies and Intel: The Total Economic Impact of Dell's PC as a Service", November 2020 <https://www.delltechnologies.com/asset/en-us/solutions/business-solutions/industry-market/forrester-the-total-economic-impact-of-dells-pc-as-a-service.pdf>
  - 24 Based on internal analysis, April 2021. Dell Optimizer available in 2020 devices, not available in OptiPlex 3000 series, Latitude 3310 2-in-1 and Latitude Chromebook Enterprise. Feature availability and functionality varies by model.
  - 25 Available on Latitude 9000 and select 7000 series; Precision mobile workstations 7000 and select 5000 series. See product details for availability.
  - 26 ExpressResponse must be enabled in the Applications feature. DO learns how user uses the selected application(s) over several hours. Based on Dell testing using Sysmark 2018 benchmark on a Latitude system running productivity applications; and using performance evaluation benchmarks on Precision mobile workstations running ISV applications, March 2020. Improvement will vary based on product configuration, use, application and other factors
  - 27 User must input preferred apps first in order for them to be analyzed.
  - 28 ExpressConnect available with Dell Optimizer software version 2.0 and onwards. Download the latest at <https://www.dell.com/support/home>.
  - 29 Disclaimer: Simultaneous multi-network connection (or Connection based teaming) is a new connectivity feature under ExpressConnect. It simultaneously sends and receives data and video traffic using two wired or wireless connections. Based on Dell internal analysis.
  - 30 Best network selection based on signal strength, channel congestion, router type and others. Network suggestions based on user credentials.
  - 31 With ExpressConnect's optimized internet bandwidth. Based on testing performed by Dell Labs in June 2020, comparing performance with ExpressConnect enabled and disabled. Actual results may vary; testing results do not guarantee performance under test conditions. Subject to service provider's broadband subscription and coverage area; speeds may vary. Additional charges will apply. Contact your service provider for details.
  - 32 Based on Dell Internal analysis, January 2019.
  - 33 Based on Principled Technologies Report commissioned by Dell Technologies, "Deliver pre-configured systems to end users faster with Dell Provisioning for VMware Workspace ONE", January 2019, comparing deployment using Dell Provisioning for Workspace ONE vs. traditional deployment. Results extrapolated to deployment of 1000 systems, a week represents seven full workdays. Actual results will vary.
  - 34 Based on a Forrester Total Economic Impact™ Study commissioned by VMware, "The Total Economic Impact™ of VMware Workspace ONE for Windows 10", September 2018. Results from interviews with VMware Workspace ONE customers and/or based on a 12,000-employee composite organization.
  - 35 Based on a Principled Technologies test report, "Spend Less Time and Effort Troubleshooting Laptop Hardware Failures" dated April 2018. Testing commissioned by Dell, conducted in the United States. Actual results will vary. Full report: <http://facts.pt/L52XKM>
  - 36 Based on Dell internal analysis, November 2021.
  - 37 Approximately 78% recycled content and 22% renewable content in the form of FSC paper fibers. Excludes optional items added to order and included in box.
  - 38 Based on Dell analysis of battery life usage model calculations, Nov. 2020. Results vary depending on use, operating conditions and other factors.
- \* Based on Dell internal analysis, November 2021.